

# Specifications Arrow Boards

## 48" x 24"

Operating Temperature – 67°F - 212°F

Shipping Weight – 125 lbs.

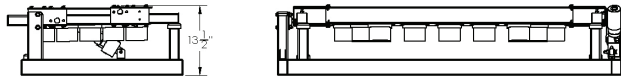
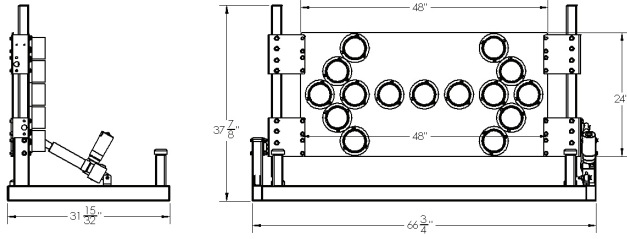
Available in 15 lamps only

Frame – Black Powder Coat, 3" x 2" Square steel tubing,

2" x 2" Square steel tube support frame

Power System – Runs off any 12 Volt Vehicle power system

Vehicle Cab Control – 7 Modes of operation



## 30" x 60"

Operating Temperature – 67°F - 212°F

Shipping Weight – 120 lbs.

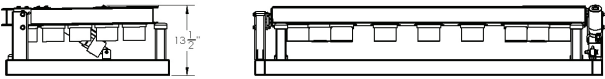
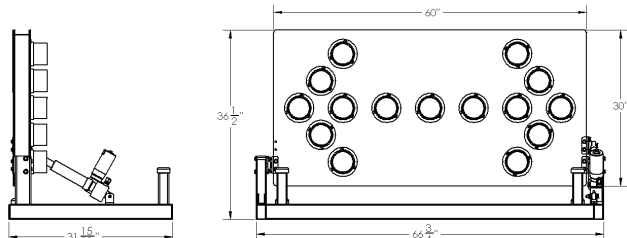
Available in 15 and 25 lamps

Frame – Black Powder Coat, 3" x 2" Square steel tubing,

2" x 2" Square steel tube support frame

Power System – Runs off any 12 Volt Vehicle power system

Controller – In cab controller - 7 Modes of operation for 15 light and 10 modes for 25 light



## 72" x 36"

Operating Temperature – 67°F - 212°F

Shipping Weight – 140 lbs.

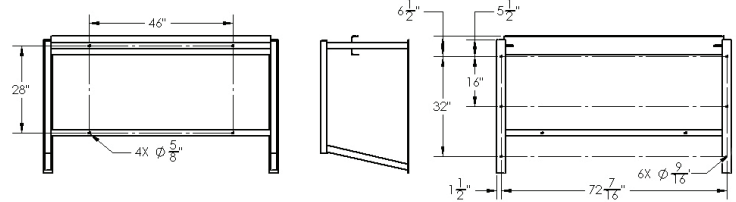
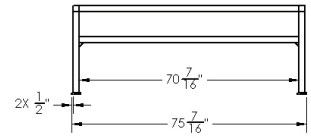
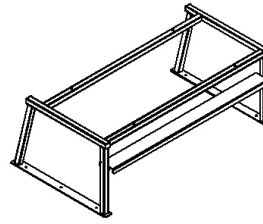
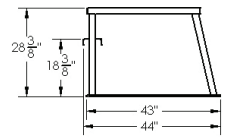
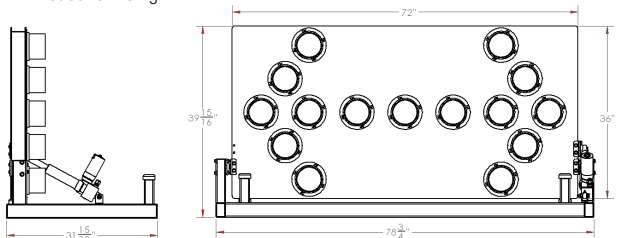
Available in 15 and 25 lamps

Frame – Black Powder Coat, 3" x 2" Square steel tubing,

2" x 2" Square steel tube support frame

Power System – Runs off any 12 Volt Vehicle power system

Controller – In cab controller - 7 Modes of operation for 15 light and 10 modes for 25 light

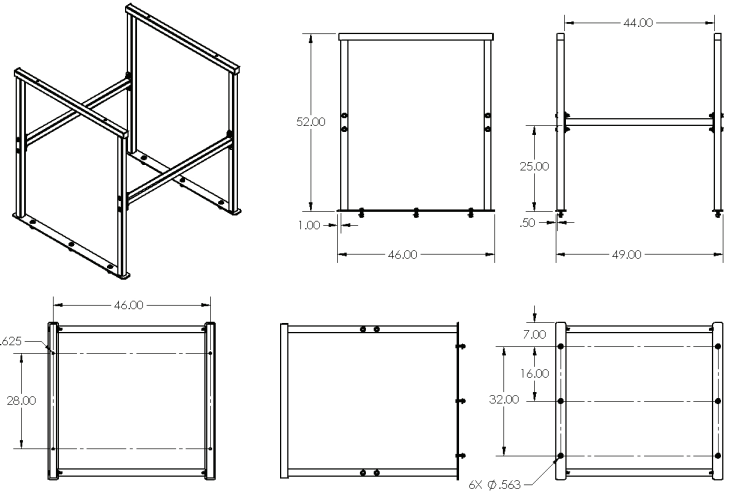


### Bed Rail Mount Frame (ABOVE).

Can mount directly to vehicle bed rail by altering frame width.

Bracket can be used so that no drilling will have to be performed on truck bed itself. Custom sized units are also available.

### Bed Mount Frame (BELOW). Mounted directly to vehicle bed.



**Disclaimer**  
Designs are subject to change without prior notice. Any modification or unintended use voids all warranties.

NESL and all subsidiaries, including Work Area Protection, disclaim all liabilities for injuries to persons or property due to any modification or unintended use of these products.

**U.S. Patents**  
Channelizer Cones U.S. Patent D485,775  
Optics for Advance Warner U.S. Patent 5,174,649



## Work Area Protection Corp.

2500 Production Drive • St. Charles, IL 60174-9081

Phone: 630.377.9100 • Orders: 800.327.4417 • Fax: 630.377.9270

Web: [www.workareaprotection.com](http://www.workareaprotection.com)

Member ATSSA

WAP Jan 2017

©2017 Work Area Protection Corp.